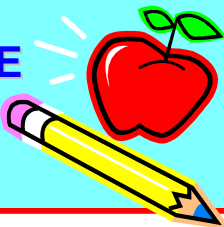




# THE 1<sup>ST</sup> GRADE FLYER



Mooresville  
Christian Academy  
Mooresville, In 46158  
February 4, 2008  
Quarter 3, Issue 5

## Miss Bowman's Classroom

Ext. 112 or e-mail me at: [m Bowman@moorevillechristian.org](mailto:m Bowman@moorevillechristian.org)

### Homework for this week

MONDAY: Read the pages on your bookmark and return your book tomorrow.

TUESDAY: **KNOW YOUR FACTS IN FIVE SECONDS OR LESS!** Adding up to 11 and subtracting from 11.

THURSDAY: Memory verse and spelling due on the 8<sup>th</sup>.



### Bible Verse

Galatians 6:2 Carry each other's burdens and in this way you will fulfill the law of Christ.

Due on Friday the 8<sup>th</sup>.

Grade from previous week. \_\_\_\_\_

### TEACHER NOTES

- Keep working on those phonic charts. Mix up the order some when you practice. The children know how the charts work and can show you. 😊
- **January Book-It is due.**
- **The Speech Meet will be the last week in February. If you would like to participate in the Speech Meet, please let me know and I will send home a packet.** If you have questions about the Speech Meet, let me know. 😊

### Spelling List # 18

bank, thank, blank, frank, stars, artist, arch, arm, start, bang, sang, clang, I, here

SPELLING TIP: Special sounds are ank, ar & ang. Listen for the difference in ank and ang. You can hear the k but not the g. The sight words are I and here.



### Upcoming Events

- Store February 22<sup>nd</sup>
- Valentine's Day February 14<sup>th</sup>
- NO SCHOOL on February 15<sup>th</sup> **unless we have a snow day.**
- President's Day February 18<sup>th</sup>-NO SCHOOL
- PTF meeting March 11<sup>th</sup>
- Auction March 15<sup>th</sup>

**Birthdays this week- NONE**